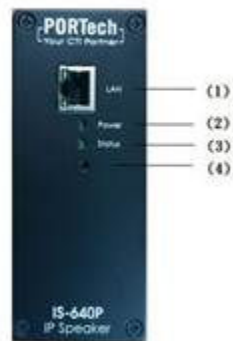


## How to find IP If IP lost

\*Only IS-640P , we have reset button in speaker

### 3.Panel description

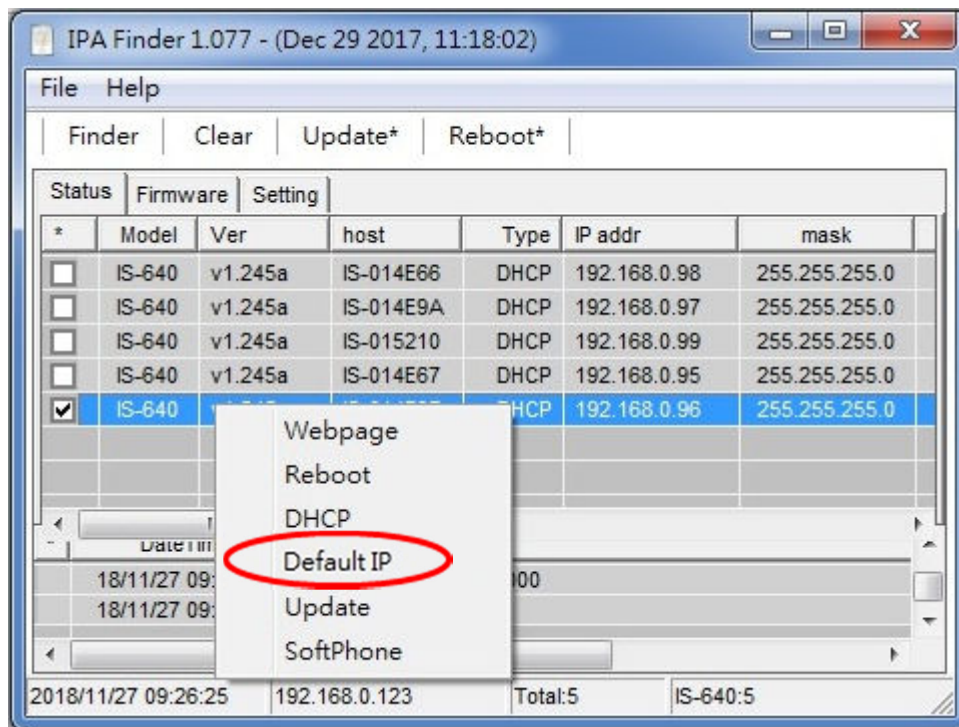


3.4 IP Reset Button : please press the button in 7-8 seconds till the status led flash blink to restore the factory default

- Other speakers, you can set reset default ip via IPA Finder web or restore default setting via IP Speaker web

## IPA Finder

[https://www.portech.com.tw/upload/web/IPA-Finder\\_1v077.zip](https://www.portech.com.tw/upload/web/IPA-Finder_1v077.zip)



Back to ip 192.168.0.100

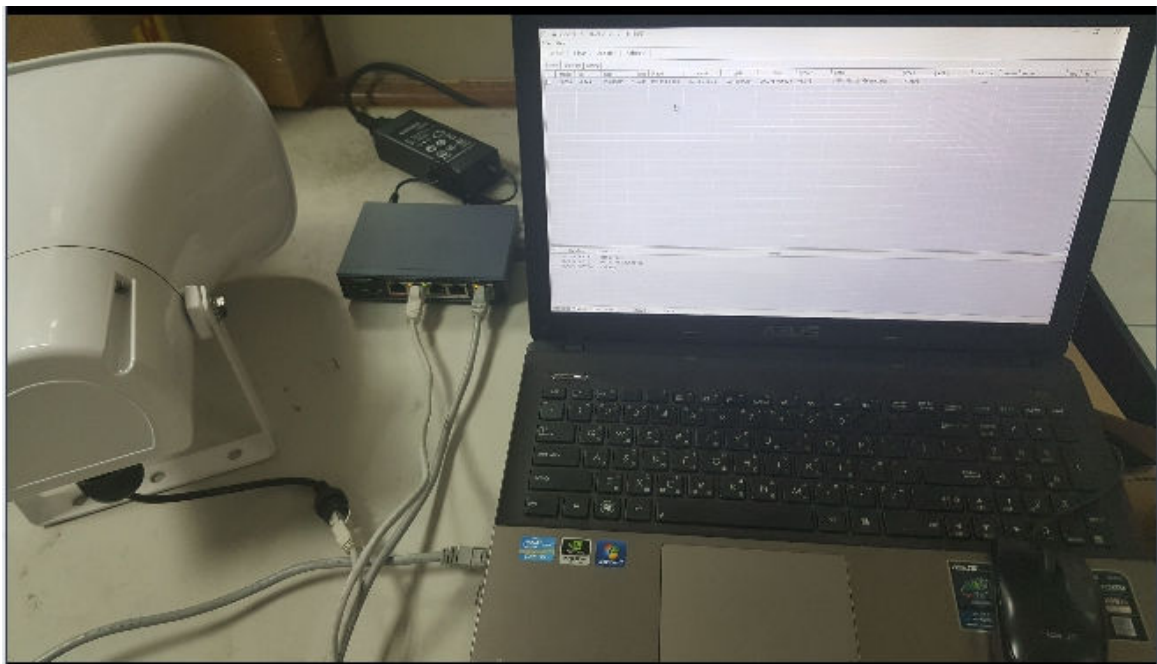
Other settings no change

\*please notice: only search portech ip speaker serial in same network

if still can't search ip, please connect your pc with poe switch, poe switch connect with horn speaker.

Pc—poe switch—horn speaker

Then use ipa finder to find out the speaker's ip



IS-660, please read p13 in user manual in following link  
<http://www.portech.com.tw/data/IS-660%20manual.pdf>

## 8.2 Default Setting

In this page: Update/ Default Settings, you could restore the factory default settings to the system. **All setting will restore default setting.**

IP will retain original IP as usual not default IP.



## Restore Default Settings

---

Restore default settings:

Step1: choose Update@Default Setting. When you want to restore default setting, please click [Restore]. You can clear all settings and auto refresh as follows.

## Restore Default Settings

---

Restore default settings: