

MT-350 SMS

Operation Manual

PORTech Communications Inc.

§ Index §

1.Hardware Setup.....	1
2.Software Setup.....	1
3.Operation Guide.....	2
4.How to send out a short message.....	3
5.Report File	6
6.Q & A.....	6



1. Hardware Setup

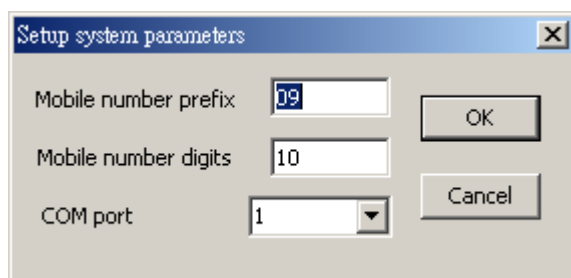
Connect the RS232 cable between PC & MT350. Any serial port of the PC can be used(The software program uses COM1 as default). Make sure the SIM card has been inserted in position and the MT350 power is on.

2. Software Setup

The software program 'MTSMS.exe' run under the OS : Windows 98/ME/2000/XP. It is recommended to run in the display mode '1024*768'.

Create a new directory in drive C: as a working directory, for example, "C:\MTSMS". Copy the software program 'MTSMS.exe' into this directory.

To execute the 'MTSMS.exe' program for the first time, the program will show a setup dialog to allow the user to setup the configuration. (Figure as below)



'Mobile number prefix' field : To check if the mobile number the user entered is a valid one. The value "09" means that the mobile number begins with "09".

'Mobile number digits' field : The digit length of the mobile number. The value "10" means that there are 10 digits in the mobile number.

'COM port' field : The serial port which is used to connect your PC to the MT350.

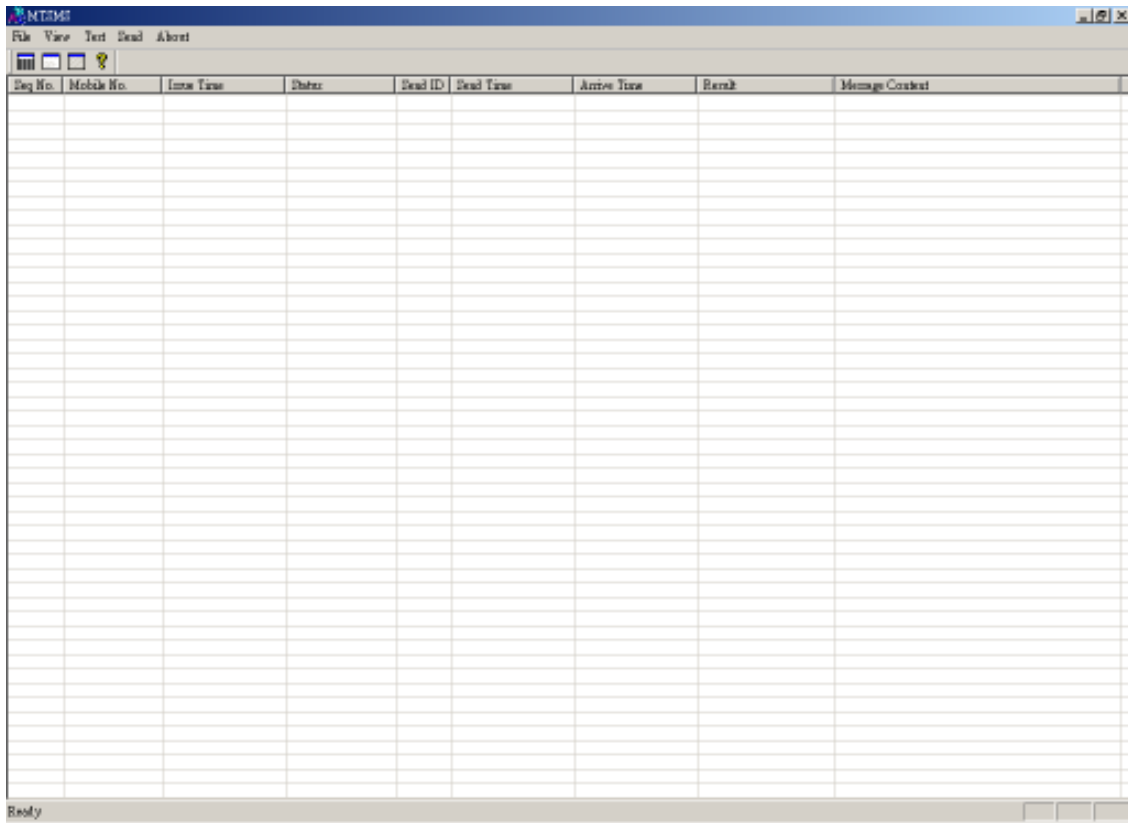
The user may change these values according to the real situation of your country.

If the COM port you entered is not '1', then you have to close the program and execute again.

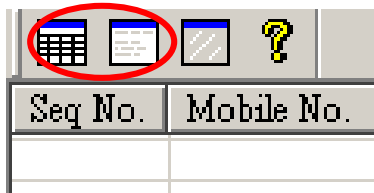
The user may change all these values after the first time setup by clicking the menu 'File/System Parameters'

3.Operation Guide

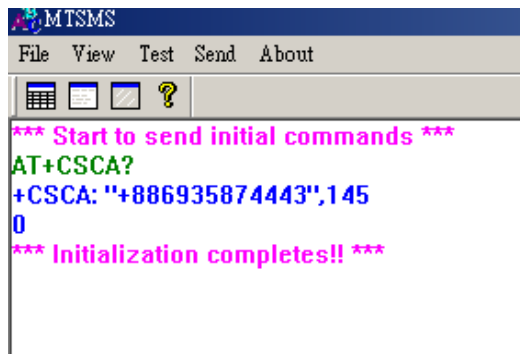
After executing the program, the following window shows up.



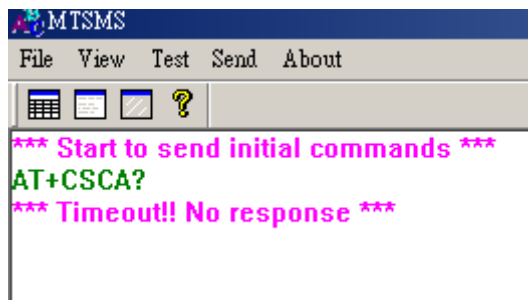
There are 2 types of display mode in the program's window : the "Short Message Item View" and the "Detail Information View". The "Short Message Item View" shows all the short messages sent or received and the status of each short message item. The "Detail Information View" shows the activities of the COM port. You may toggle these two views in the window menu 'View/Switch to short message item view' or 'View/Switch to detail information view'. Or there are two icon buttons in the toolbar to toggle these two views.



Once the program executed, you may switch to the detail information view to check if the communication works properly.

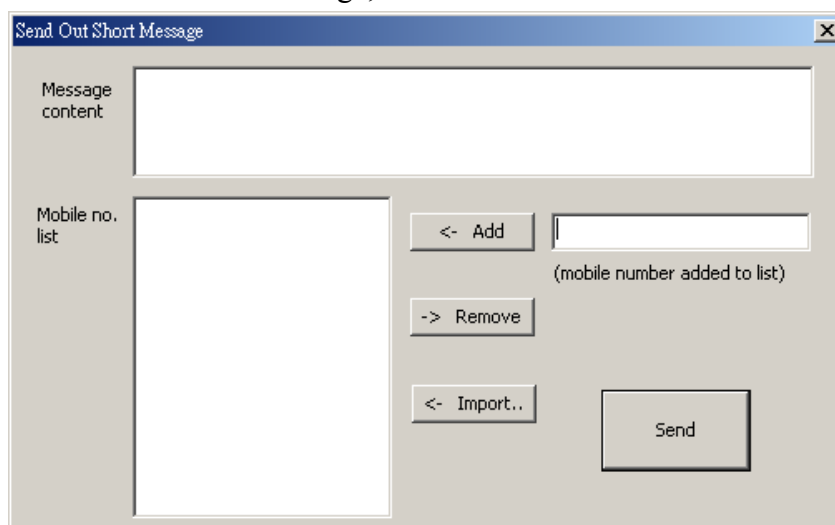


If the message “*** Initialization completes!! ***” shows up, then the communication between MT350 and the PC is OK, otherwise, you will see the message : “*** Timeout!! No response ***”. In that circumstance, the serial port might not be assigned correctly, or it is occupied by other application program.

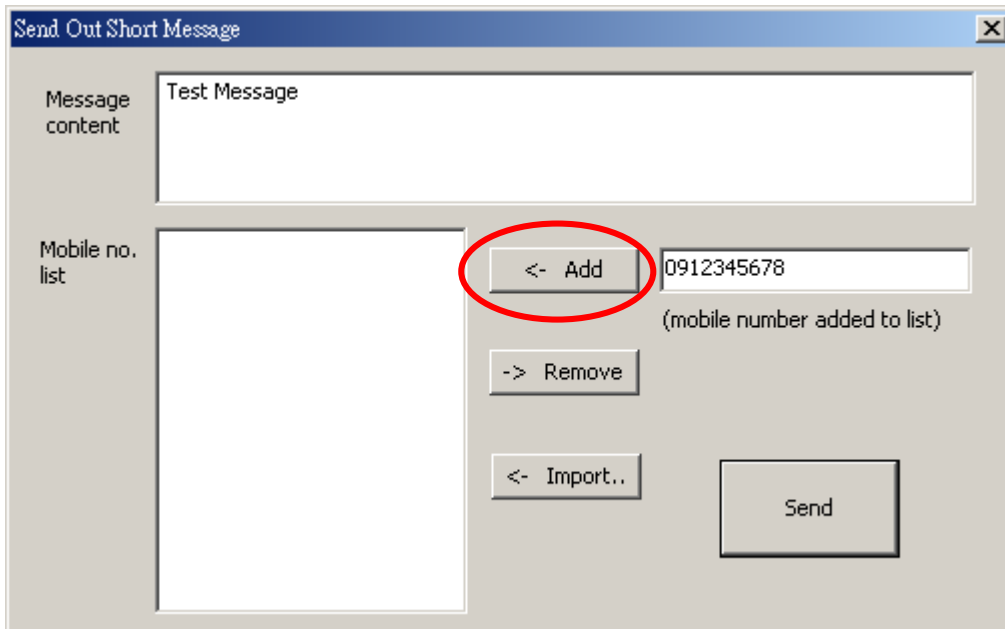


4.How to send out a short message.

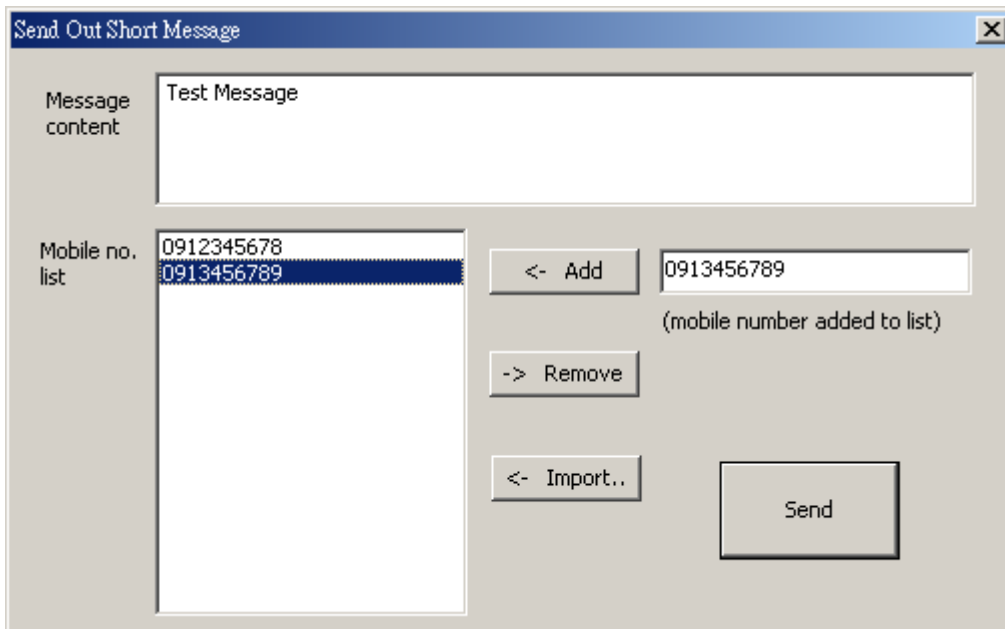
To send out a short message, click ‘Send’ in the window menu.



You can have multiple destination mobile numbers to send common messages. First, type in the message content and mobile number to add into list, then click ‘<- Add’ button.



Enter other mobile number then click ‘<-Add’ button to add into the mobile number list.



You can also remove mobile number from the list, or import mobile numbers from external data file. Click ‘<-Import’ button.



Choose a file to be imported. In the imported file, each line contains one mobile number.

When all data is ready, click 'Send' button to send message out.

A short message item is inserted in the short message item view. The sending procedure will show clearly in this view, and user may see the status of each sending message.

MTSMS						
File View Test Send About						
Seq No.	Mobile No.	Issue Time	Status	Send ID	Send Time	Arrive Time
2	0914187579	2004/03/11 17:34:24	Send OK	47	2004/03/11 17:34:28	

Each short message item will be assigned a unique sequence number by the program.

After this message is sent out by the MT350 GSM module, the GSM module will reply a send ID to identify this message.

The sequence number increases each time a new short message issued. This can be used to count the total short messages sent out. If there is a monthly limitation of sending short message for the SIM card, you can control the amount and stop sending any messages out. You may reset the sequence number to 1 by clicking menu 'File/Reset Sequence Number'

Seq No.	Mobile No.	Joice Time	Status	Send ID	Send Time	Arrive Time	Result	Message Content
1	0914187579	2004/03/11 17:34:24	Send OK	47	2004/03/11 17:34:28			Test of sending message to 0914187579
***	+862914187579		Received message			2004/03/11 17:53:15		REPLY MESSAGE

When a short message is received by MT350, a new item will be inserted in the view. The above figure reflects the situation.

5.Report File

There are 3 types of log file could be referenced for further use. In the working directory, e.g. “C:\MTSMS”, 3 subdirectory will be created automatically : “COMLOG”, “SENDMSG”, “RCVMSG”.

“COMLOG” subdirectory saves the data sent and received between PC COM port and MT350. It is mainly used for debugging purpose. There is a system parameter to control whether to save or not. From window menu ‘File/Log Send & Receive Data’, user can have this function checked or unchecked. There will be a file created every day named ‘LOGyyyymmdd.TXT’.

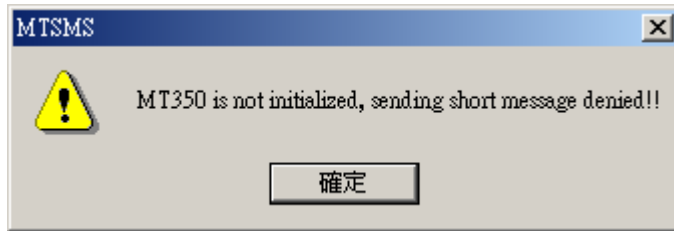
“SENDMSG” subdirectory saves the records for sending out short messages. There are 3 files created each day which named ‘SENDyyyymmdd.TXT’, ‘OKyyyymmdd.TXT’ and ‘RPYyyyymmdd.TXT’ respectively.

When a short message issued to send out by user, a new record is added in the ‘SENDyyyymmdd.TXT’ file. After MT350 sends out this short message, a new record is added in the ‘OKyyyymmdd.TXT’ file. As long as this short message is accepted by the destination site, MT350 will reply this condition and a new record is added in the ‘RPYyyyymmdd.TXT’ file.

“RCVMSG” subdirectory saves the short messages received by MT350. A file named ‘RCVyyyymmdd.TXT’ is created each day when there are short messages received by MT350.

6.Q & A

(1) When clicking window menu ‘Send’, an error dialog shows up.



In this case, switch the view to 'Detail Information View' to check whether the communication between PC COM port and MT350 works normally. Try to issue the initial commands to MT350 by clicking 'Test/Issue Initial Commands'. If the "Timeout" message still appears, then check the RS232 cable. If the MT350 is used to make a phone call while this program begins to run, then the "Timeout" message appears. So you have to send initial commands manually to complete the initialization.



PORTech Communications Inc.

150, Shiang-Shung N. Road Taichung, Taiwan 403, R.O.C.

Tel: 886-4-2305-8000 Fax: 886-4-2302-2596

<http://www.portech.com.tw>