

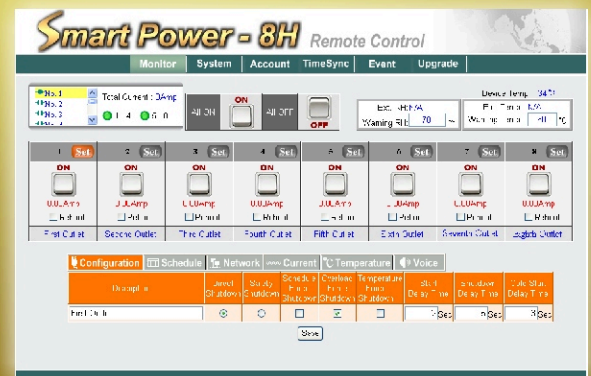
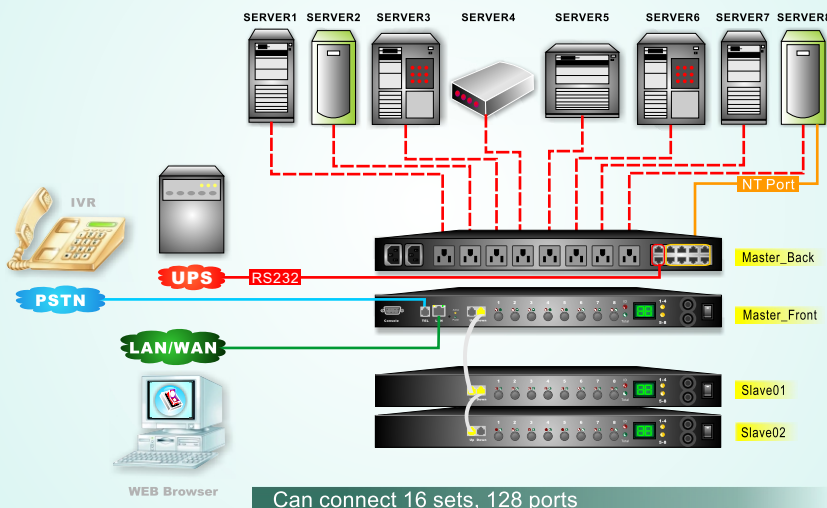
SMART POWER

Remote Control Surveillance Management System

- Control Power Switch of Remote Equipment via network or phone voice to replace the presence of the personnel.
- Execute Power On / Off / Reboot via Console to manage its performance.
- LED panel to inspect current equipment ID、Total current and each router current directly.
- Detect whether two sets of power circuit are normal automatically.
- It can be linked with 16 sets monitors at maximum to control up to 128 sets of connected devices.
- It can be attached temperature detector to control the power switch according to environment change.
- It is equipped with overloading electric breaking protector to avoid overloading to cause device damage.
- Support nearby Manual Power Switch.
- Support Power Start sequence setting to prevent all of switches from starting simultaneously to cause sudden overloading and effect equipment working.
- Provide 20 sets of accounts and passwords for your own setting to manage different power switches.
- Record the user's operating message and abnormal message to provide the user to check the case afterwards.
- Support Wake on Ring function. ATX equipment can be started normally.
- By brief message and email warning to practice the instant surveillance and warning to important equipment.
- Detect whether the power current of all routes are normal or not to avoid current overloading to damage the device.
- Pre-set Switch Start Time and arrange the working schedule for power supply.
- Each rout can detect UPS low power signal to provide safety shut-down management for the equipment.
- Provide remote net firmware to renew the function.
- Provide API interface. The manager can develop the control software by himself.
- Support Windows、Linux to execute the safety shot-down and avoid system damage.



Demo diagram of Smart Power monitoring



Function	SP-8H	SP-4H	SP-8L	SP-4L
Power contrl function				
Network remote control	●	●	●	●
IVR vocal operation	●	●	●	●
Console control	●	●	●	●
Panel function				
LED display total current	●	●	●	●
LED display current for each socket	●	●		
LED display device ID	●			
Panel button control	●	●		
Detect / Protection				
Current detect	● (Every port)	● (Every port)	● (Total current)	● (Total current)
Build-in Temp. Detect	●	●	●	●
Outer attached Temperature&Humidity monitor	●			
Power overload protection	● (Every port)	● (Every port)	● (Total current)	● (Total current)
Ping device alive	●			
UPS power low detect	●			
Safety shutdown				
Windows safety shutdown	●			
Linux safety shutdown	●			
Software feature				
Friendly GUI	●	●	●	●
Chinese/English double language	●			
Login account	20	4	8	4
Reboot sequence	●	●	●	●
Schedule control	●	●	●	●
Operation record inquiry	●	●	●	●
Operation alarm record	●	●	●	●
API control	●	●	●	●
Web online firmware upgrade	●	●	●	●
Software alarm				
E-mail alarm	●	●	●	●
Alarm message inquiry	●	●	●	●
Support SNMP protocal	●	●	●	●
Operation environment				
Power outlet	8	4	8	4
Input voltage range	85 ~ 264 VAC	85 ~ 264 VAC	85 ~ 264 VAC	85 ~ 264 VAC
Max. output current	15A * 2	15A	15A	15A
Machine frame size	Rack mount		Rack mount	
Max.daisy-chain unit	16 Sets (128 Ports)	No	No	No
Outlet type	A/B/Dry contact/48V	A/B/Dry contact/48V	A/B/Dry contact/48V	A/B/Dry contact/48V
Optional accessory				
Switch cable	C13(A) Switch to EU socket			